



Our Work - Fully Rooting the Paradigm



# The Way of Christ and His Apostles - Rooting the Paradigm

1. Why did God bring all of us together during this generation, what are we meant to accomplish?
2. Can we truly understand the times in which we live, during the times we live them? Or can we only understand them years later after we look back?
3. If we know what we are to accomplish, can we intentionally strategize to accomplish them or do we instead try to survive this life?
4. At least, since the 1970's this church family has been called to introduce TWCA paradigm back to the global church. How would you explain The Way of Christ and His Apostles to someone? What is it? What are we talking about?

# The Way of Christ and His Apostles - Rooting the Paradigm

## 4 Main Components of TWCA

1. Local Churches - being a family
2. Church Networks - churches living and moving among civilizations
3. Pauline/Apostolic Teams - leadership that moves among local and global networks
4. Shepherding Elders of local churches - leaders that protect and care for local churches/people

## Key Charts

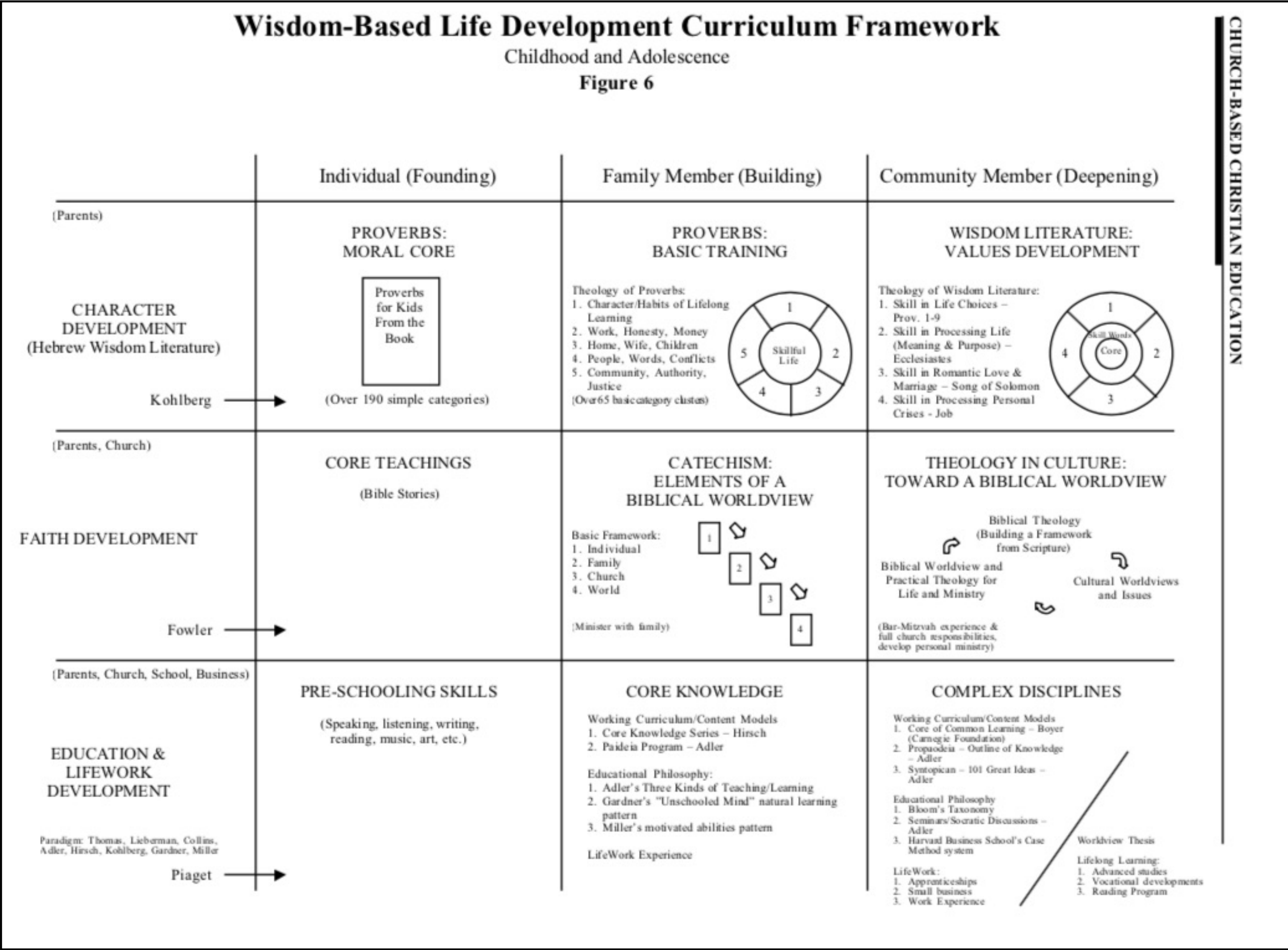
- Pauline Cycle, Kerygma/Didache, Paul's Concept of Establishing, Paul/Timothy Model

# The Way of Christ and His Apostles - Rooting the Paradigm

All of us should have an individual developmental pathway

All of our families should have a developmental pathway

# The Way of Christ and His Apostles - Rooting the Paradigm



# The Way of Christ and His Apostles - Rooting the Paradigm

Our Family of Families should have a developmental pathway, guided by the local leaders

# The Way of Christ and His Apostles - Rooting the Paradigm

Existing leaders - should work towards enrolling and doing the work of a Certificate of Ministry pathway

Emerging leaders - master the First Principles, LifeN,

Hosts of Churches - First Principles Series I, Going to Church in the First Century

Older - regularly engaged in ordered learning opportunities, intentionally investing in younger

Parents - PWP, LifeN, regularly engaged in ordered learning opportunities

Youth - regularly engaged in ordered learning opportunities

Children - Kids Stories Kids Studies



# The Way of Christ and His Apostles - Rooting the Paradigm



## The Story

Resources for opening the scriptures to those desiring to follow Jesus as the early followers did after his resurrection.

[See Details >](#)



## The First Principles Series

Engage every believer in the first principles of Christianity.

[See Details >](#)



## Mastering the Scriptures Series

Guiding maturing believers and local (modal) church leaders in a process of solidly understanding the entire Bible.

[See Details >](#)



## The Leadership Series

Comprehensive theological education within the life and ministry of local churches.

[See Details >](#)



## Life Development Resources

Resources for developing skill in all areas of life, for all ages.

[See Details >](#)



## Core Education Series

Resources designed to lay a solid general education foundation for all students.

[See Details >](#)



## Paradigm Resources

Develop your understanding of the global church-based theological education paradigm.

[See Details >](#)

# The Way of Christ and His Apostles - Rooting the Paradigm

Did you realize that we are not only responsible for our individual lives and church families, we are also responsible for introducing and maturing global church networks in TWCA?

Did you notice I said “we”? Not just the apostolic leaders, not only the BILD team.

# The Way of Christ and His Apostles - Rooting the Paradigm

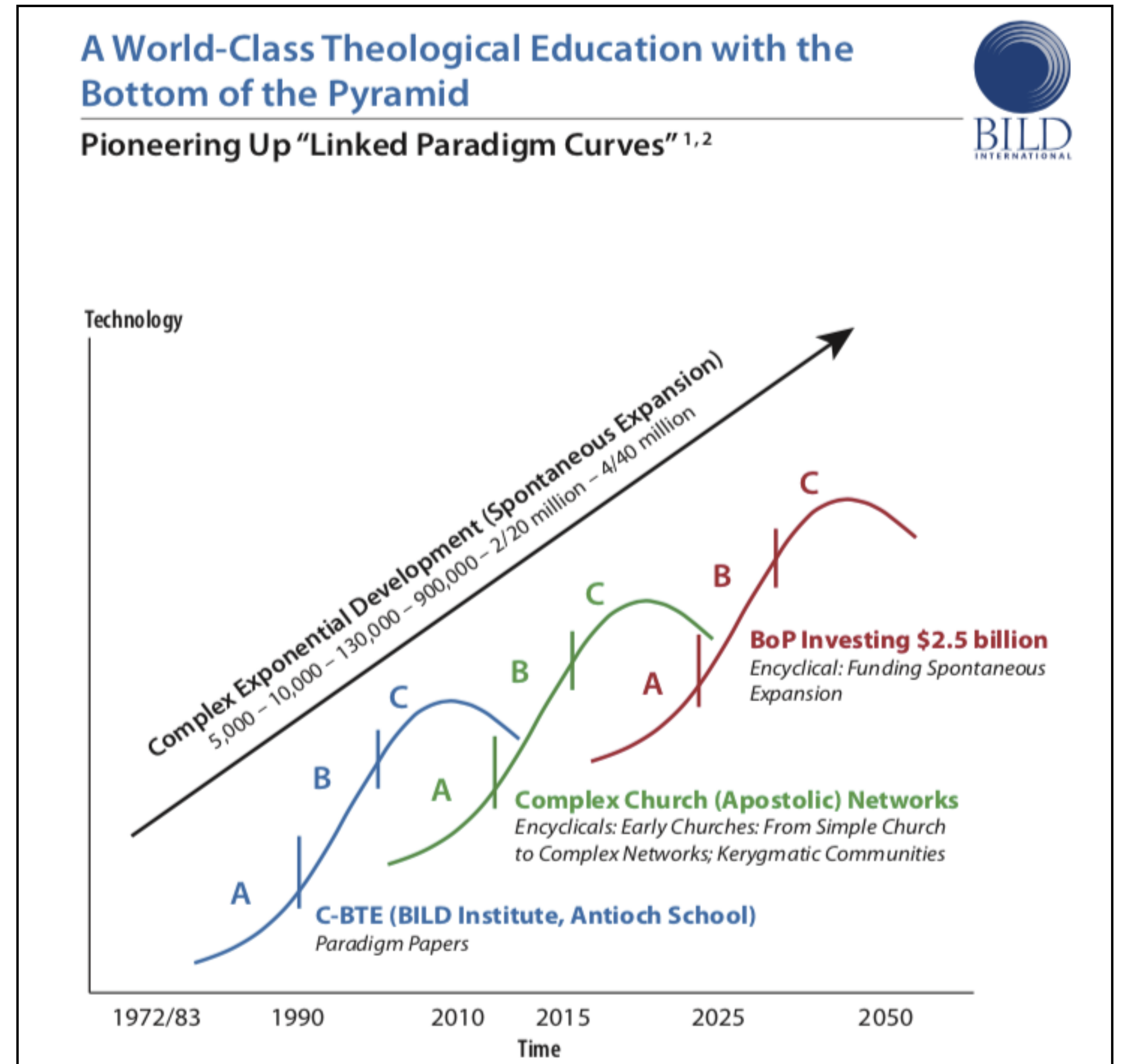
Our global developmental stage is to: fully root the global network in the paradigm

Understanding the past 40+ years, to understand where we are today.

# The Way of Christ and His Apostles - Rooting the Paradigm

Since the 1970s

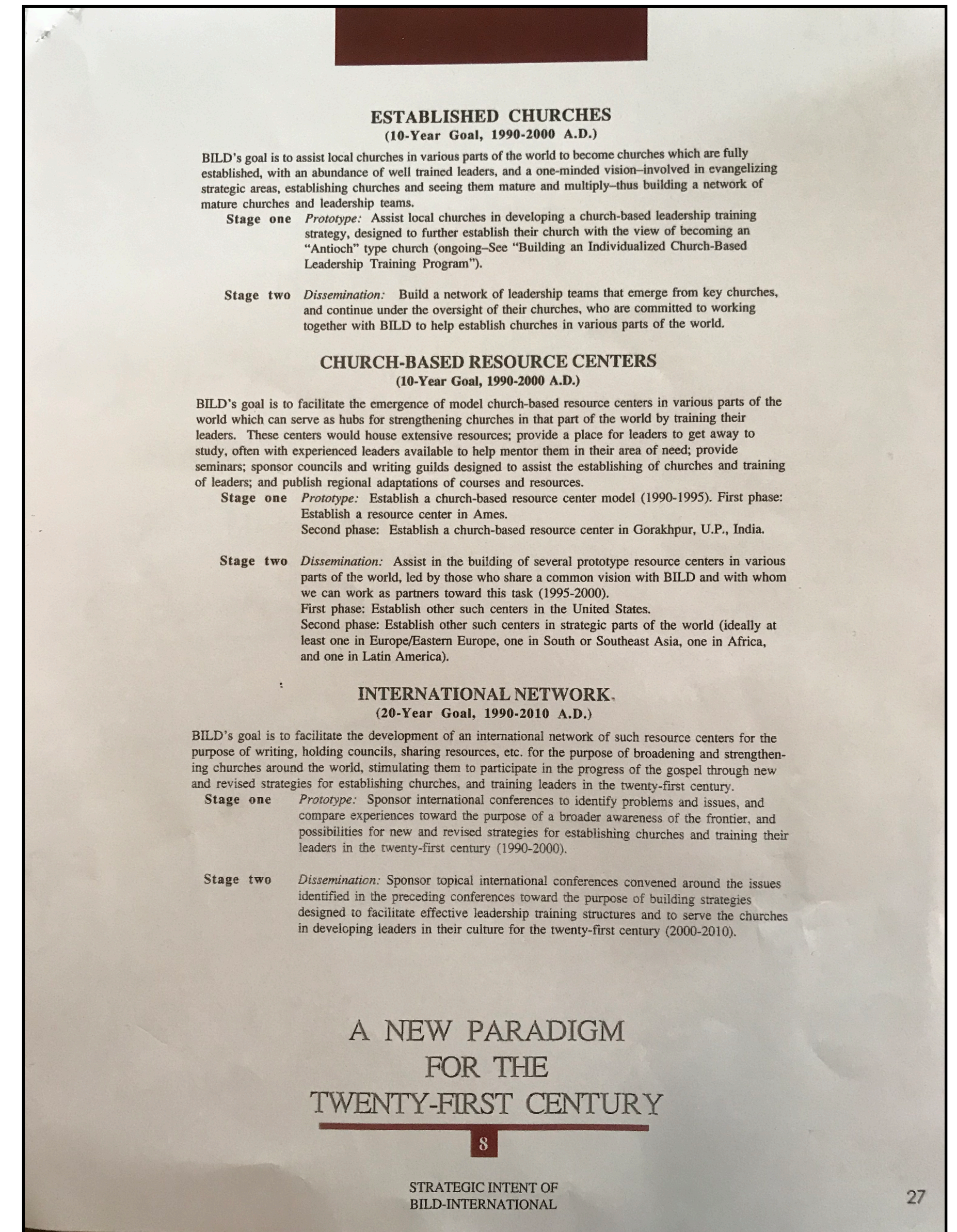
- recovered The Way of Christ and His Apostles
- created tools for churches to learn to think “biblically”, the BILD Encyclopedia
- steadily built a local model that fully represents the paradigm, churches as families, modal/sodal healthy tension
- introduced TWCA to global networks, influential leaders, targeting the global south



# The Way of Christ and His Apostles - Rooting the Paradigm

## Our Original Strategy

1. Establish the Churches
2. Create Church Based Resource Centers
3. Build an International Network



# The Way of Christ and His Apostles - Rooting the Paradigm

## 1. Establish the Churches

- using our Antioch School D Min pathway we can equip the top leaders to equip the entire network

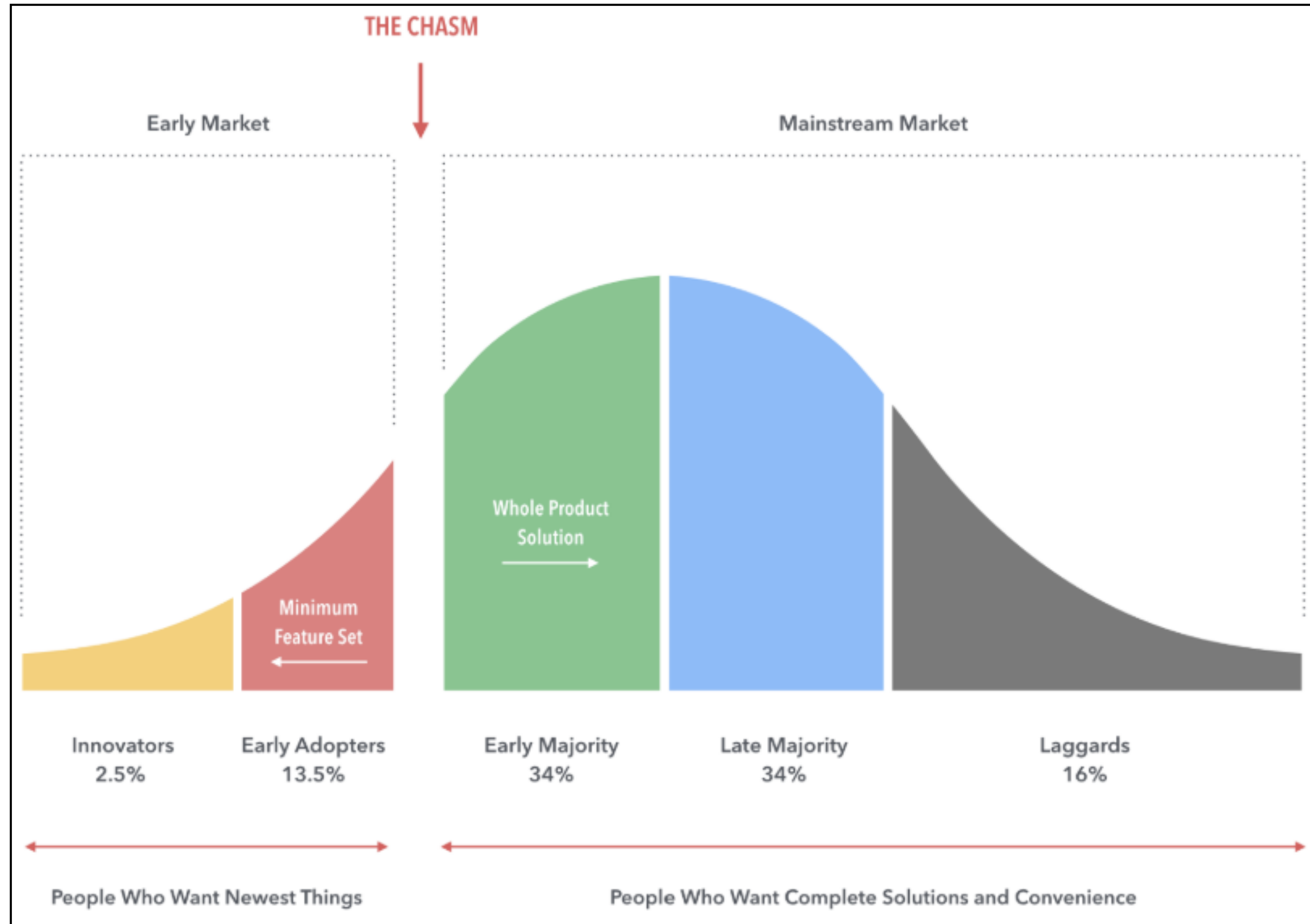
## 2. Create Church Based Resource Centers

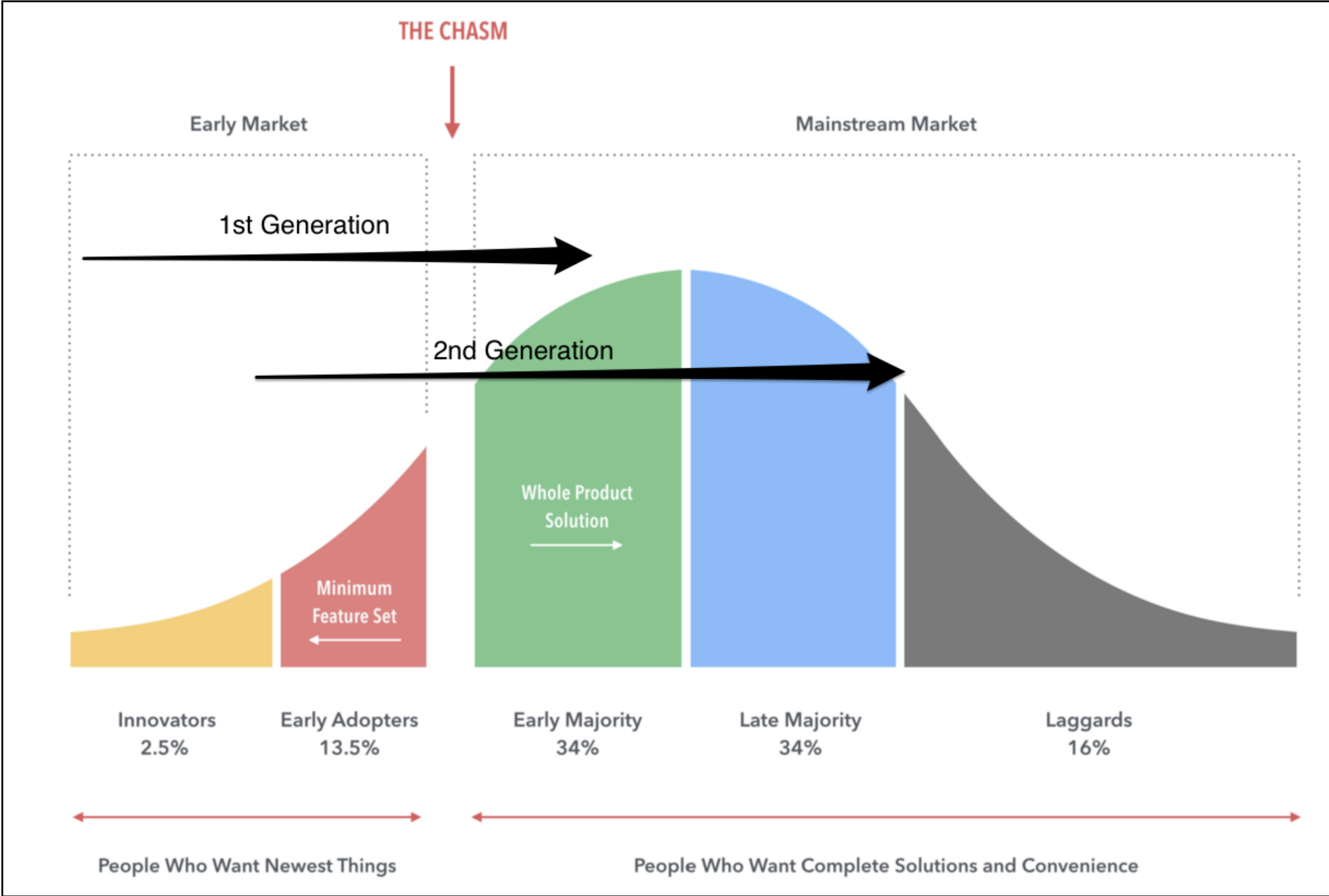
- a large portion of my time is dedicated over the next 3 years in build Global Resource Centers

## 3. Build an International Network

- Our apostolic team (BILD) regularly moves amongst the networks
- Our annual global conference is critical for this to succeed

# The Way of Christ and His Apostles - Rooting the Paradigm







6 If you put these things before the brothers, you will be a good servant of Christ Jesus, being trained in the words of the faith and of the good doctrine that you have followed. 7 Have nothing to do with irreverent, silly myths. Rather train yourself for godliness; 8 for while bodily training is of some value, godliness is of value in every way, as it holds promise for the present life and also for the life to come. 9 The saying is trustworthy and deserving of full acceptance. 10 For to this end we toil and strive, because we have our hope set on the living God, who is the Savior of all people, especially of those who believe.

11 Command and teach these things. 12 Let no one despise you for your youth, but set the believers an example in speech, in conduct, in love, in faith, in purity. 13 Until I come, devote yourself to the public reading of Scripture, to exhortation, to teaching. 14 Do not neglect the gift you have, which was given you by prophecy when the council of elders laid their hands on you. 15 Practice these things, immerse yourself in them, so that all may see your progress. 16 Keep a close watch on yourself and on the teaching. Persist in this, for by so doing you will save both yourself and your hearers.

1 Timothy 4:6-16

<sup>4</sup>As I remember your tears, I long to see you, that I may be filled with joy. <sup>5</sup>I am reminded of your sincere faith, a faith that dwelt first in your grandmother Lois and your mother Eunice and now, I am sure, dwells in you as well. <sup>6</sup>For this reason I remind you to fan into flame the gift of God, which is in you through the laying on of my hands, <sup>7</sup>for God gave us a spirit not of fear but of power and love and self-control.

2 Timothy 1:3-7

You then, my child, be strengthened by the grace that is in Christ Jesus, <sup>2</sup> and what you have heard from me in the presence of many witnesses entrust to faithful men, <sup>[a]</sup> who will be able to teach others also. <sup>3</sup> Share in suffering as a good soldier of Christ Jesus. <sup>4</sup> No soldier gets entangled in civilian pursuits, since his aim is to please the one who enlisted him. <sup>5</sup> An athlete is not crowned unless he competes according to the rules. <sup>6</sup> It is the hard-working farmer who ought to have the first share of the crops. <sup>7</sup> Think over what I say, for the Lord will give you understanding in everything.

2 Timothy 2:1-7

# The Way of Christ and His Apostles - Rooting the Paradigm

Implications for us a network of churches leading TWCA global network

- we are to be trained, this training is going to be hard work
- we are to be self disciplined in the work, paying special attention to our teachings
- we are to be strong like a soldier, some who is trained in the work
- we are to strive to have a mastery of the work, like an athlete who is continuously training
- we are to work hard like a farmer, doing all the important tasks needed to accomplish bringing in the crop

I commend to you our sister Phoebe, a servant of the church at Cenchreae, that you may welcome her in the Lord in a way worthy of the saints, and help her in whatever she may need from you, for she has been a patron of many and of myself as well.

Greet Prisca and Aquila, my fellow workers in Christ Jesus, who risked their necks for my life, to whom not only I give thanks but all the churches of the Gentiles give thanks as well. Greet also the church in their house. Greet my beloved Epaenetus, who was the first convert to Christ in Asia. Greet Mary, who has worked hard for you. Greet Andronicus and Junia, my kinsmen and my fellow prisoners. They are well known to the apostles, and they were in Christ before me. Greet Ampliatus, my beloved in the Lord. Greet Urbanus, our fellow worker in Christ, and my beloved Stachys. Greet Apelles, who is approved in Christ. Greet those who belong to the family of Aristobulus. Greet my kinsman Herodion. Greet those in the Lord who belong to the family of Narcissus. Greet those workers in the Lord, Tryphaena and Tryphosa. Greet the beloved Persis, who has worked hard in the Lord. Greet Rufus, chosen in the Lord; also his mother, who has been a mother to me as well. Greet Asyncritus, Phlegon, Hermes, Patrobas, Hermas, and the brothers who are with them. Greet Philologus, Julia, Nereus and his sister, and Olympas, and all the saints who are with them. Greet one another with a holy kiss. All the churches of Christ greet you.

- Phoebe - a deacon, she was a **great benefit** (a benefactor) to many in the churches and to Paul
- Prisca, Aquila - **worked and risked their lives**, which had an impact on all the Gentile churches, they **hosted a church** in their home
- Epaenetus - the **first convert** in Asia
- Mary - she **worked very hard**
- Andronicus and Junia - Paul's **relatives**, In Christ before Paul
- Ampliatius - beloved in the Lord
- Urbanus, Stachys - **sends greetings**
- Apelles - approved in Christ - the **worker approved means tested, genuine** - these are directly tied to “work”, as one is approved and tested as genuine by the fruit of their work.
- Aristobulus family - Herodion, family of Narcissus - **Families**
- The **workers in the Lord** - tryphaena and Tryphosa
- Persis - **worked hard** in the Lord
- Rufus and his mother - who is **a mother to Paul as well**
- Asyncritus, Phlegon, Hermes, Patrobas, Hermas - **brothers and sisters** in Christ

# The Way of Christ and His Apostles - Rooting the Paradigm

Paul is not just greeting friends, his purpose is a greeting that binds all of Christ's churches. He is building a church network. This is the model left for us.

In order to continue to continue to establish and mature a global network we need to:

- be living it out individually and as a families, being consistently immersed in it
- be fully engaged as churches, investing in each other
- fully committing ourselves to the rooting of the global network, the conference is one of everyone's best opportunities to fully engage

# The Way of Christ and His Apostles - Rooting the Paradigm

The global conference

- we are going to be talking about completing the work, competency work
- providing executive education pathway
- delivering uneducated apostles encyclical
- unveiling the TWCA Implementation Pathway

# The Way of Christ and His Apostles - Rooting the Paradigm

## Summary of the 8 Themes

1. Vision and Commitment of Leaders
  - As you try to implement TWCA paradigm it is important that the leadership of the sphere you are working in understand the vision and are orientated with TWCA. Leadership in every area is setup by God, thus it is important to start with their authority in each work.
2. Launching of Competency Cohorts
  - The leadership needs to decide who needs to become fully competent in the paradigm. The options for gaining competency is to be part of a competency cohort or executive education (see step 5). A cohort is a group of learners that gather regularly. The pathway we follow for gaining competency is Doctorate and/or Master of Ministry degree track.
3. Ongoing Workshops of Competency Cohort in Becoming a Master Craftsmen
  - Those who participate in competency cohorts will be on a journey of learning and implementing the paradigm. This journey is for this group of leaders to become "master craftsmen" "rightly handling the word of truth", following the normative principles Paul gave to Timothy for leadership in the churches.
4. Vision and Commitment of Leaders
  - Those who participate in competency cohorts will be teaching (or participating with) the Leadership Series and First Principles. Understanding these resources is essential for everyone's development.
5. Executive Education
  - This is for leaders who want to understand TWCA paradigm but are not going to regularly participate in the D. Min or M. Min. degrees. These will be educational opportunities geared for executive types who want understand the paradigm.
6. Access to the BILD Resources
  - Everyone will need the biblical tools that these pathways are built upon, we call these tools the BILD resources. Many will need the BILD resources in their native tongue. Often, each civilization of the world will have different distribution strategies that fits the culture. Understanding the status of translations for each resources and the distribution strategy for each area of the world is the focus on this theme in the pathway.
7. Funding Your Vision
  - If you have been given a vision and have dreams of accomplishing this work, you also carry the responsibility of funding the work. Longterm suitability starts from the beginning, with the right orientation and exceptions. It is important that you build benefactors in your own context, as a part of your team. In the short-term this is also where we provide the processes and tools for working with benefactor churches and foundations.
8. Sustaining Large Scale Theology in Culture Systems
  - Collectively our global role is to expand and established our churches and networks to the ends of the earth. We are instructed that our people engage in good occupations, meet the pressing needs of our communities, while overall seeking the welfare of the cities. As our world becomes more urban, building city initiatives, reaching urban centers, and having a strategy for the shadow parts of the city and bottom of the pyramid investing becomes vital.

Pathway Identification	Pathway	What	Why	Who	The Primary Tools	Additional Tools & Materials
	<b>Vision and Commitment of Leadership</b>					
1a	Vision of TWCA, using C-BTE				Intro PPT to TWCA, CBTE	Brief introduction of BILD history, B
1b	Understanding the BILD Theological Encyclopedia and BILD University System				BILD Encyclopedia document	
1c	Purpose and Understanding of Executive Education				Executive Education brochure	
1d	Understanding Core Components of Global Network				The Center brochure	Including 3 types of partne
1e	Oreintation to BILD Resources				PTP book, Acts, Teaching First Principles	
1f	Mapping your Sphere of Work				Michael's Mapping Steps	
1g	Understanding and Purpose of Competency Cohorts					
1h	Creating a 5-year Plan to Firmly Establish the Paradigm of TWCA				Michael 5-yr Plan PPT template	
1i	Signature of Memorandum of Understanding				Partnership MOU	Given to BILD, GRC, Civilization AT
	<b>Launching of Competency Cohort</b>					
2a	Key Skills for Development - Reading and Writing					
2b	Key Skills for Development - Socratic Discussion and Critical Thinking					
2c	Key Skills for Development - Mentoring and Assessments					
2d	Pathway for becoming a MasterCraftsmen - Understanding of Antioch School Dashboard					
2e	Antioch School Dashboard - Life & Ministry - LifeN, MAP				AS Dashboard	
2f	Antioch School Dashboard - Paradigm Transformation Projects				AS Dashboard	
2g	Antioch School Dashboard - Artifact				AS Dashboard	
2h	Antioch School Dashboard - Teaching/Taking Leadership Series, First Principles				AS Dashboard	
2i	Antioch School Dashboard - Ministry Practicum				AS Dashboard	
2j	Orientation to BILD Cloud - Applying, admittance, commendation into Antioch School, BILD Institute					
2k	Orientation to BILD Cloud - Purpose and orientation to competencies					
2l	Orientation to BILD Cloud - Rubric Assessment Orientation				BILD Cloud Rubric	
2m	Consistently Completing Competencies - Key Habits for Aquiring Wisdom				See Michael's Completing Comp Doc	
	<b>Ongoing Workshops of Competency Cohort in Becoming Master Craftsmen</b>					
3a	Creating 5 year plan for cohort events				See Steve's cohort event planning	
3b	Creating a schedule and expectations for Life and Ministry work				See Steve's 6 month scenrio - create as	
3c	Creating a schedule and expectations for Paradigm Transformation Projects work				See Steve's 6 month scenrio - create as	
3d	Creating a schedule and expectations for Artifact work				See Steve's 6 month scenrio - create as	
3e	Creating a schedule and expectations for Teaching/Taking Leadership Series and First Principles work				See Steve's 6 month scenrio - create as	
3f	Creating a schedule and expectations for Ministry Practicum work				See Steve's 6 month scenrio - create as	
	<b>Teaching/Taking the Leadership Series and First Principles</b>					
4a	Orientation to Teaching the First Principles					
4b	Orientation to Discussing the Paradigm Transformation Projcts					
4c	Oerientation to the Leadership Series					
4d	Enrolling leaders into Masters, Bachelors or Leadership Mastery Certificates					
	<b>Executive Education</b>					
5a	Purpose and Leaders to Partcipate					
5b	Expectations of Events					
5c	Enrolling, Costs and Signup					
	<b>Access to the BILD Resources</b>					
6a	Understanding Current Translation Status				See BILD Cloud location	
6b	Viewing Translations In BILD Cloud reader				See BILD Cloud location	
6c	Current Civilization Distribution Strategies					Indian languages - <a href="http://bildstore">http://bildstore</a>
	<b>Funding Your Vision</b>					
7a	Funding the C-BTE of Your Leadership				Building Pauline Teams, benefactors are	
7b	Creating an overall partnership budget - For all entities involved and cohorts involved					
7c	Determining your sustainability model					
7d	Determining your needed income from cohorts					
7e	Determining your immediate audience for additional funding					
7f	Keys in working with BILD, foundations and USA churches					
	<b>Sustaining Large Scale Theology in Culture Systems</b>					
8a	Overview, Understanding and Launching City Initiatives					
8b	Overview, Understanding and Launching of Reching Urban Centers					
8c	Overview, Understanding and Launching of Shadow City Initiatives					
8d	Overview, Understanding and Launching of Bottom of Pyramid Investing					



# The Way of Christ and His Apostles - Rooting the Paradigm

The global conference - we all can participate by:

- continuing to fully engage as individuals and churches in ordered learning
- assist with transportation and food needs
- open your homes to international guests
- take time off of work to accomplish needed tasks, look to be proactive and engage, don't wait for someone to ask you, we are asking you now
- give finances to cover the costs of hosting the conference
- while they are in your homes, engage with them in the purposes of what we are doing, filling in the "chasms" of understanding